

# POLIFAN flap discs

Special Line SGP ★★★★★



## POLIFAN-CURVE

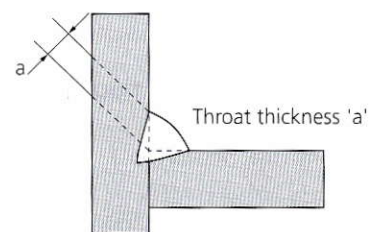
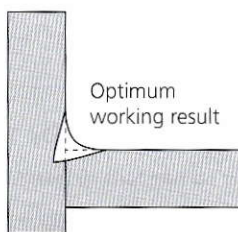
The patented flap disc POLIFAN-CURVE has been specially developed for work on fillet welds. It is the only flap disc in the world that has flaps on both the grinding side and on the rear side, as well as on the radius.

### Advantages:

- High stock removal rate ensures fast work progress and therefore significant wage cost savings.
- Outstanding tool life when working on fillet welds.
- Precise and optimum grinding of the fillet weld geometry.

### Recommendations for use:

- Type M:**  
For fillet weld radii > 5 mm or throat thickness ≤ 6 mm with 90° joint, width at the radius: 11 mm or 14 mm with diameter 150 mm.
- Type L:**  
For fillet weld radii > 8 mm or throat thickness > 6 mm with 90° joint, width at the radius: 14 mm or 16 mm with diameter 150/180 mm.



## Z SGP CURVE STEELOX ★★★★★

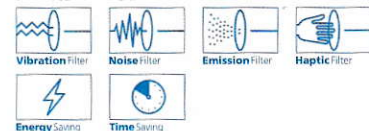
High-performance flap disc for maximum stock removal on steel and stainless steel (INOX).

**Materials that can be worked:**  
steel, stainless steel (INOX)

**Applications:**  
work on fillet welds, weld dressing, chamfering, deburring

**Abrasive:**  
Zirconia alumina Z

### PFERDVALUE:



D [mm]	Fillet weld radius	Grit size
		40
EAN 4007220		

Width	H [mm]	Max. RPM



### Description

#### Radial type PFR

D [mm]	Fillet weld radius	Grit size	Width	H [mm]	Max. RPM	Box	Description
115	> 5 mm	821671	M (11 mm)	22.23	13,300	10	PFR 115-M Z 40 SGP CURVE STEELOX
	> 8 mm	821695	L (14 mm)	22.23	13,300	10	PFR 115-L Z 40 SGP CURVE STEELOX
125	> 5 mm	790151	M (11 mm)	22.23	12,200	10	PFR 125-M Z 40 SGP CURVE STEELOX
	> 8 mm	790175	L (14 mm)	22.23	12,200	10	PFR 125-L Z 40 SGP CURVE STEELOX
150	> 5 mm	844939	M (14 mm)	22.23	10,200	10	PFR 150-M Z 40 SGP CURVE STEELOX
	> 8 mm	844946	L (16 mm)	22.23	10,200	10	PFR 150-L Z 40 SGP CURVE STEELOX
180	> 8 mm	881248	L (16 mm)	22.23	8,500	10	PFR 180-L Z 40 SGP CURVE STEELOX



## CO SGP CURVE STEELOX ★★★★★

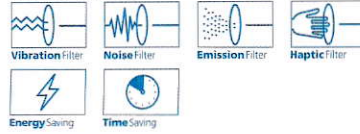
High-performance flap disc for achieving fine finishes on steel and stainless steel (INOX).



**Materials that can be worked:**  
stainless steel (INOX), steel

**Applications:**  
work on fillet welds, weld dressing,  
chamfering, deburring

**Abrasive:**  
Ceramic oxide grain CO with active grinding,  
cooling coating

**PFERDVALUE:**



D [mm]	Fillet weld radius	Grit size	Width	H [mm]	Max. RPM		Description	
		60						
		EAN 4007220						
<b>Radial type PFR</b>								
								
115	> 5 mm	827444	M (11 mm)	22.23	13,300	10	PFR 115-M CO 60 SGP CURVE STEELOX	
	> 8 mm	827451	L (14 mm)	22.23	13,300	10	PFR 115-L CO 60 SGP CURVE STEELOX	
125	> 5 mm	790168	M (11 mm)	22.23	12,200	10	PFR 125-M CO 60 SGP CURVE STEELOX	
	> 8 mm	790182	L (14 mm)	22.23	12,200	10	PFR 125-L CO 60 SGP CURVE STEELOX	

## A SGP CURVE ALU ★★★★★

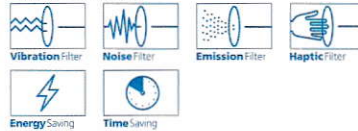
Special flap disc for work on fillet welds on aluminium.


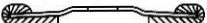
**Materials that can be worked:**  
aluminium, other non-ferrous metals

**Applications:**  
work on fillet welds, weld dressing,  
chamfering, deburring

**Abrasive:**  
Aluminium oxide A with active grinding, cool-  
ing coating

**PFERDVALUE:**



D [mm]	Fillet weld radius	Grit size	Width	H [mm]	Max. RPM		Description	
		40						
		EAN 4007220						
<b>Radial type PFR</b>								
								
115	> 8 mm	851968	L (14 mm)	22.23	13,300	10	PFR 115-L A 40 SGP CURVE ALU	
125	> 8 mm	851975	L (14 mm)	22.23	12,200	10	PFR 125-L A 40 SGP CURVE ALU	

