

Need a product urgently?

CALL US: +65 6294 6388

EMAIL: cmltc@singnet.com.sg

VISIT US: 75 Rowell Road, Singapore 208011

OPENING HOURS: Monday-Friday, 9.00AM – 5.30PM

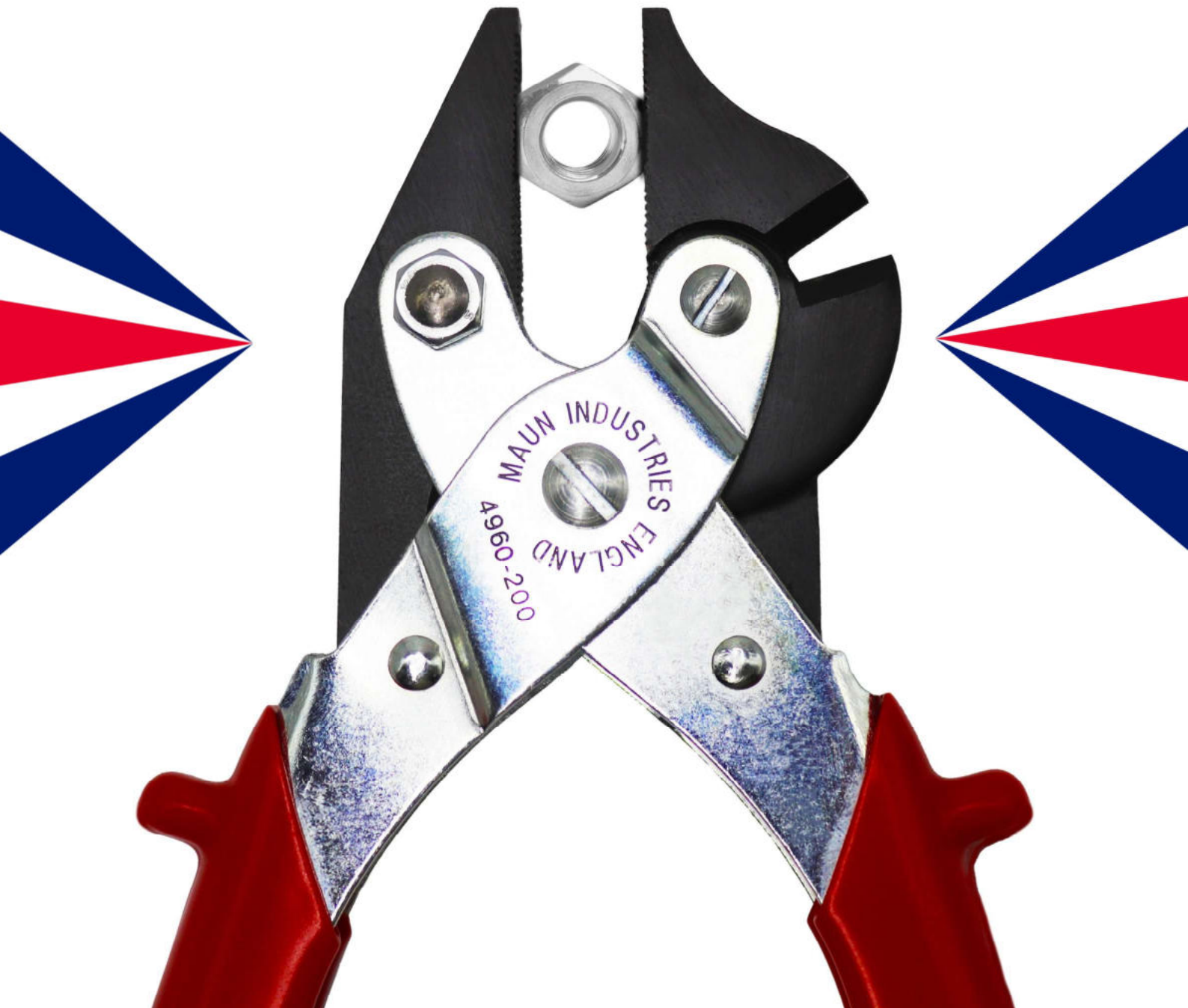
Why choose Chan Man Lee?

- ✓ Ready stock of 25,000 products
- ✓ No MOQ required for majority of our products
- ✓ Product pickup ready in 10 minutes~1 working day
- ✓ Certified/authorised distributor for over 30 brands
- ✓ Only supplies products from well-known, esteemed brands
- ✓ Only genuine, authentic, factory-original products
- ✓ Technical knowledge on product codes (IMPA, sizing, etc.)

MAUN

NO ORDINARY PLIER
MAKER. **SINCE 1944.**

INDUSTRIAL **TOOLS CATALOGUE**





**NO ORDINARY PLIER
MAKER. SINCE 1944.**

A BRIEF HISTORY OF MAUN

Maun Industries was founded on 1st January 1944 by members of the Rippon family. Named after the nearby River Maun and led by skilled engineers, the company set about developing and manufacturing its range of innovative hand tools.

For six decades, Maun operated from Moor Lane, Mansfield. In 2004, the business relocated to new, purpose-built premises in nearby Sutton in Ashfield. The Rippon policy was to manufacture all tools in-house and sell worldwide, a philosophy that we proudly continue.



Maun's quality management system is certified to ISO 9001 and has been for 30 years. Our cutting pliers conform to BS 3087-7:1996, ISO 5747:1995, standards that we were instrumental in defining.

Maun Industries was owned by its founding family for 64 years. However, time catches up with us all, and the Rippsons sold the company in 2008.

At the end of 2019, ownership of the business changed again. Maun Industries is now controlled and managed by Timothy Scholes. Building on the traditions of the past, he is investing to ensure the firm's sustained growth and long-term prosperity.





The combination plier reimagined. Designed to bend, straighten, cut and grip. Our side cutter parallel pliers deliver all the functionality of a classic combination plier - and do it better. They are the union of our best cutting and gripping pliers in one package.

Cut harder materials with ease

Compound-lever action reduces the effort required to make a cut. Each of our side cutter parallel pliers is engineered to cut a grade above most equivalent pliers of a similar size.



Grip your workpiece more securely

Parallel-action serrated jaws provide a vice-like grip along their entire length, perfect for square and hexagonal fastenings.



Work with pipe, stud, bar and cable like never before

The v-slot increases the contact area and grip on cylindrical shapes. The open throat allows infinite movement along the length of the material.

SIDE CUTTER PARALLEL PLIERS



Portable, practical and powerful

Our 140 mm, 160 mm and 200 mm tools are capable across a range of applications. Whether it's heavy-duty power or reliable everyday functionality, we've got you covered.



Tactile ergonomics

Pressed steel handles with detailing give you a firm, natural grip. Options like PVC grips or return springs provide added comfort for all-day use.



Built to last a lifetime

Precision-machined jaws and cutting edges are hardened to a minimum of HRC57, complete with a rust-resistant finish.





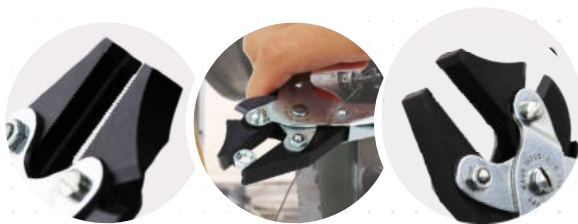
SIDE CUTTER PARALLEL PLIER FOR HARD WIRE

The combination plier reimagined, featuring a compound-lever-action cutter and parallel-action jaws. An open throat and serrated jaws give you a precise grip, every time.

- Cutting jaw with compound-lever action. Multiplies hand force by up to 25x for less cutting effort.
- Precision-machined cutting edges, hardened to a minimum of HRC 57 (200 mm model HRC 65) for durability and a clean cut.
- Parallel-action jaws for a vice-like grip on square and hexagonal fastenings.
- V-slot for a firm, consistent grip on cable, stud and rod.
- Open throat allows cable, stud and rod to pass through the plier. A unique gripping solution.



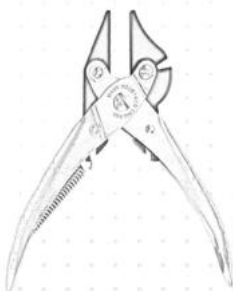
PART NO.	LENGTH (MM / IN)	HANDLE SPAN (MM / IN)		JAW (MM / IN)				CUTTING PERFORMANCE (DIA. Ø MM / AWG)			WEIGHT (G / LBS)
		CLOSED	OPEN	OPENING	USABLE LENGTH	WIDTH	TIP HEIGHT	SOFT WIRE	HARD WIRE	PIANO WIRE	
4950-140	140 / 5.5	50 / 2.0	100 / 3.9	10 / 0.39	28 / 1.10	8.0 / 0.31	2.2 / 0.09	3.0 / 9.0	2.0 / 12	1.6 / 14	145 / 0.32
4950-160	160 / 6.5	50 / 2.0	130 / 5.1	14 / 0.55	34 / 1.34	9.0 / 0.35	3.0 / 0.12	4.0 / 6.0	2.5 / 10	2.0 / 12	240 / 0.53
4950-200	200 / 8.0	55 / 2.2	160 / 6.3	17 / 0.67	40 / 1.57	12.5 / 0.49	3.5 / 0.14	6.0 / 3.0	3.0 / 9.0	2.5 / 10	480 / 1.06



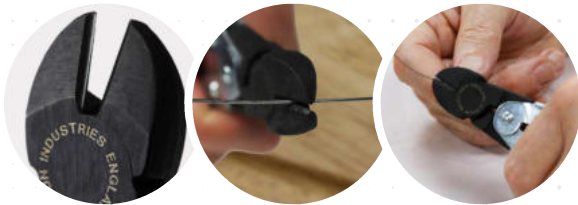
SIDE CUTTER PARALLEL PLIER FOR HARD WIRE WITH RETURN SPRING

The combination plier reimagined, featuring a compound-lever-action cutter and parallel-action jaws. An open throat and serrated jaws give you a precise grip, every time. The return spring automatically opens handles for easy all-day use.

- Cutting jaw with compound-lever action. Multiplies hand force by up to 25x for less cutting effort.
- Precision-machined cutting edges, hardened to a minimum of HRC 57 for durability and a clean cut.
- Return spring automatically opens the plier to reduce strain in repetitive use.
- Parallel-action jaws for a vice-like grip on square and hexagonal fastenings.
- V-slot for a firm, consistent grip on cable, stud and rod.
- Open throat allows cable, stud and rod to pass through the plier. A unique gripping solution.



PART NO.	LENGTH (MM / IN)	HANDLE SPAN (MM / IN)		JAW (MM / IN)				CUTTING PERFORMANCE (DIA. Ø MM / AWG)			WEIGHT (G / LBS)
		CLOSED	OPEN	OPENING	USABLE LENGTH	WIDTH	TIP HEIGHT	SOFT WIRE	HARD WIRE	PIANO WIRE	
4951-140	140 / 5.5	55 / 2.2	110 / 4.3	10 / 0.39	28 / 1.10	8.0 / 0.31	2.2 / 0.09	3.0 / 9.0	2.0 / 12	1.6 / 14	135 / 0.30
4951-160	160 / 6.5	55 / 2.2	130 / 5.1	14 / 0.55	34 / 1.34	9.0 / 0.35	3.0 / 0.12	4.0 / 6.0	2.5 / 10	2.0 / 12	225 / 0.50



DIAGONAL CUTTING PLIER FOR HARD WIRE

High performance, premium diagonal cutting plier with return spring. Engineered with durable precision jaws and compound-lever action for maximum efficiency.

- Cutting jaw with compound-lever action. Multiplies hand force by up to 22x (160 mm model) for less cutting effort.
- Jaws induction hardened to HRC 64 for durability.
- Precision-machined, angled cutting edges for a clean peak cut.
- Return spring automatically opens the plier to reduce strain in repetitive use.

PART NO.	LENGTH (MM / IN)	HANDLE SPAN (MM / IN)		JAW (MM / IN)		CUTTING PERFORMANCE (DIA. Ø MM / AWG)			WEIGHT (G / LBS)
		CLOSED	OPEN	OPENING (TIP)	BLADE LENGTH	SOFT WIRE	HARD WIRE	PIANO WIRE	
2990-140	140 / 5.5	55 / 2.2	130 / 5.1	8.0 / 0.31	16 / 0.63	3.0 / 9.0	2.0 / 12	1.6 / 14	145 / 0.32
2990-160	160 / 6.5	60 / 2.4	145 / 5.7	8.0 / 0.31	16 / 0.63	4.0 / 6.0	2.5 / 10	2.0 / 12	165 / 0.36



DIAGONAL CUTTING PLIER FOR HARD WIRE WITH COMFORT GRIPS

A high performance, premium diagonal cutting plier with return spring and comfort grips. Engineered with durable precision jaws and compound-lever action for maximum efficiency.

- Cutting jaw with compound-lever action. Multiplies hand force by up to 22x (160 model) for less cutting effort.
- Jaws induction hardened to HRC 64 for durability.
- Precision-machined, angled cutting edges for a clean peak cut.
- Return spring automatically opens the plier to reduce strain in repetitive use.
- PVC-sleeved handles provide additional comfort and reduce temperature transfer.

PART NO.	LENGTH (MM / IN)	HANDLE SPAN (MM / IN)		JAW (MM / IN)		CUTTING PERFORMANCE (DIA. Ø MM / AWG)			WEIGHT (G / LBS)
		CLOSED	OPEN	OPENING (TIP)	BLADE LENGTH	SOFT WIRE	HARD WIRE	PIANO WIRE	
2999-140	140 / 5.5	58 / 2.3	133 / 5.2	8.0 / 0.31	16 / 0.63	3.0 / 9.0	2.0 / 12	1.6 / 14	160 / 0.35
2999-160	160 / 6.5	63 / 2.5	148 / 5.8	8.0 / 0.31	16 / 0.63	4.0 / 6.0	2.5 / 10	2.0 / 12	190 / 0.42

STRAIGHT EDGES & SAFETY RULES

Accuracy is the baseline for our products. So, as well as clean lines and precision measurements, our engineering straight edges and safety rules come with a host of other features.

A precision guide

Straight edges are manufactured with a variation of $<\pm 0.01\%$ or $<\pm 0.084$ mm per metre of length, an accuracy that can be trusted for engineering and automotive applications.

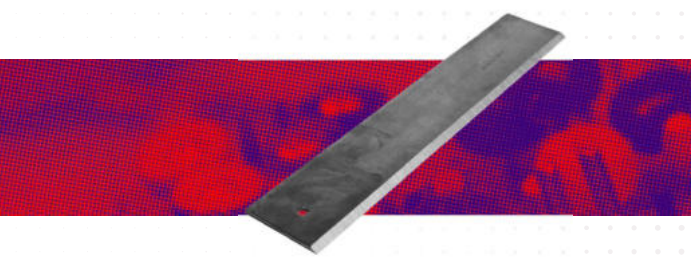
Perfect visibility

Clean bevelled edges provide an unobstructed view, so marking and scoring can be completed precisely and reliably, time and again.



Safety by design

From the reassuring weight of the steel range, to the non-slip backing on the aluminium range, and the finger-safe profiles on both aluminium straight edge and safety rules. Marking, measuring and setting is always safe and precise with Maun.



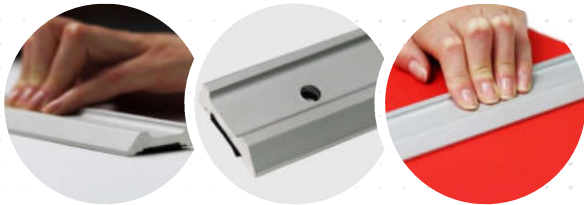
STEEL STRAIGHT EDGE

Steel straight edges designed for exceptional precision with less than $\pm 0.01\%$ variation per metre. High-grade carbon steel finished with a bevel to the precision edge and smooth clean surfaces.

- Precision bevelled edge, accurate to $<\pm 0.084$ mm per metre ($<\pm 0.001$ inch per foot).
- Stays firmly in place with a width designed for the safe placement of a supporting hand.
- High-grade carbon steel for durability, machined for a smooth finish to protect the workpiece.
- Safe for use with scribes and knives.
- Available in a range of metric and Imperial dimensions, all with a 6 mm hanging hole for easy storage.

PART NO.	LENGTH (MM / IN)	WIDTH (MM / IN)	THICKNESS (MM / IN)	WEIGHT (G / LBS)
1700-500	500 / 19.6	53 / 2.08	3.25 / 0.128	660 / 1.46
1700-800	800 / 31.5	53 / 2.08	3.25 / 0.128	1040 / 2.29
1700-001	1000 / 39.4	53 / 2.08	3.25 / 0.128	1310 / 2.89
1700-125	1250 / 49.2	53 / 2.08	3.25 / 0.128	1650 / 3.64
1700-150	1500 / 59.1	53 / 2.08	3.25 / 0.128	1980 / 4.37
1700-175	1750 / 68.9	53 / 2.08	3.25 / 0.128	2310 / 5.09
1701-012	304.8 / 12	53 / 2.08	3.25 / 0.128	400 / 0.88
1701-018	457.2 / 18	53 / 2.08	3.25 / 0.128	610 / 1.35

PART NO.	LENGTH (MM / IN)	WIDTH (MM / IN)	THICKNESS (MM / IN)	WEIGHT (G / LBS)
1701-024	609.6 / 24	53 / 2.08	3.25 / 0.128	750 / 1.65
1701-030	762 / 30	53 / 2.08	3.25 / 0.128	1000 / 2.21
1701-036	914.4 / 36	53 / 2.08	3.25 / 0.128	1190 / 2.62
1701-048	1219.2 / 48	53 / 2.08	3.25 / 0.128	1600 / 3.53
1701-054	1371.6 / 54	53 / 2.08	3.25 / 0.128	1800 / 3.97
1701-060	1524 / 60	53 / 2.08	3.25 / 0.128	2010 / 4.43
1701-072	1828.8 / 72	53 / 2.08	3.25 / 0.128	2700 / 5.95



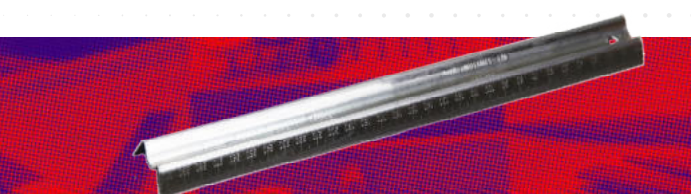
ALUMINIUM SAFETY STRAIGHT EDGE

Aluminium safety straight edges designed for exceptional precision with less than $\pm 0.01\%$ variation per metre. Featuring a grooved upper surface and a non-slip backing and finger-guard channel on the top surface. Aluminum construction with a bevel to the precision edge and smooth clean surfaces.

- Precision bevelled edge, accurate to $< \pm 0.084$ mm per metre ($< \pm 0.001$ inch per foot).
- Stays firmly in place with a non-slip backing and finger-guard channel on the top surface.
- High-grade extruded aluminium, lightweight and easy to handle.
- Safe for use with scribes and knives.
- Available in a range of metric dimensions from 300 mm to 3000 mm, all with a 6 mm hanging hole for easy storage.

PART NO.	LENGTH (MM / IN)	WIDTH (MM / IN)	THICKNESS (MM / IN)	WEIGHT (G / LBS)
1710-030	300 / 11.8	40 / 1.57	10.5 / 0.41	192 / 0.42
1710-050	500 / 19.8	40 / 1.57	10.5 / 0.41	322 / 0.71
1710-060	600 / 23.6	40 / 1.57	10.5 / 0.41	394 / 0.87
1710-080	800 / 31.5	40 / 1.57	10.5 / 0.41	516 / 1.14
1710-100	1000 / 39.4	40 / 1.57	10.5 / 0.41	645 / 1.42

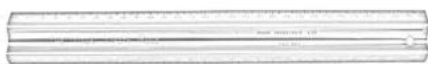
PART NO.	LENGTH (MM / IN)	WIDTH (MM / IN)	THICKNESS (MM / IN)	WEIGHT (G / LBS)
1710-125	1250 / 49.2	40 / 1.57	10.5 / 0.41	806 / 1.78
1710-150	1500 / 59.1	40 / 1.57	10.5 / 0.41	967 / 2.13
1710-185	1850 / 72.8	40 / 1.57	10.5 / 0.41	1194 / 2.63
1710-200	2000 / 78.7	40 / 1.57	10.5 / 0.41	1290 / 2.84
1710-300	3000 / 118.1	40 / 1.57	10.5 / 0.41	1935 / 4.27



METAL SAFETY RULE

Designed for safety. Built for precision. The safety rules feature an ingenious M-shaped profile to keep fingers away from the cutting edge. Manufactured from durable, industrial-grade stainless steel to provide a light-weight, shatterproof cutting rule for engineers, compatible with scribes and knives.

- Unique M-shaped profile allows fingers to be positioned in the recessed area.
- Easy-to-read scale graduations.
- 12" with mixed Imperial / metric scales and 300 mm with metric scale only.
- Crafted from high-quality stainless steel for a long, corrosion-free life.



PART NO.	LENGTH (MM / IN)	SCALES		WIDTH (MM / IN)	HEIGHT (MM / IN)	WEIGHT (G / LBS)
		SIDE A	SIDE B			
1773-012	300 / 12	IMPERIAL	METRIC	40 / 1.57	11 / 0.43	105 / 0.23
1774-300	300 / 12	METRIC	METRIC	40 / 1.57	11 / 0.43	105 / 0.23

PUNCHES & PUNCH PLIERS

Whatever hole you need to make, Maun Industries' range of punches mean you get the job done right, first time, every time! From gaskets to washers and more, our punches are expertly engineered to produce clean consistent holes with every use.

Wad punches

Easily punch washers, gaskets and belts, across a range of metric and Imperial sizes with a retracting centre pin to assist with aligning concentric gasket circles. Hardened to HRC 45, the punches and handle are built for comfort in use and are durable.



Revolving punch pliers

Six punches in one tool, available at the simple twist of a barrel. Our original time saving concept is available as a standard punch. For tougher materials, our heavy-duty model features an effort-reducing compound-lever-action mechanism.

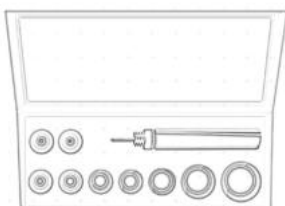


9-PIECE WAD PUNCH SET WITH CENTRE PUNCH

A complete kit with a selection of punches that accommodates a versatile range of needs. Precision-made to exacting standards, perfect for making precisely shaped gaskets and washers in a variety of sizes.



- Spring-loaded hardened centre punch accurately positions hole centres and ejects slugs.
- One handle compatible with the entire range of punches.
- Punches ground to a fine cutting edge for precision, then hardened and tempered to HRC 45 for durability.
- Compatible with a range of soft materials, including felt, rubber, leather, plastic and cork.
- One set contains nine different-sized punches in a choice of either metric or Imperial sizes.
- Supplied in a lightweight polypropylene storage box.



PART NO.	CENTRE PUNCH LENGTH (MM / INCH)	PUNCH DIMENSIONS	PUNCHES INCLUDED	WEIGHT (G / LBS)
1000-05	150 / 6.0	METRIC	5, 6, 8, 10, 12.5, 16, 20, 25, 32 MM	960 / 2.12
1001-05	150 / 6.0	IMPERIAL	1/4, 5/16, 3/8, 7/16, 1/2, 5/8, 3/4, 7/8, 1 INCH	910 / 2.01

Need a product urgently?

CALL US: +65 6294 6388

EMAIL: cmltc@singnet.com.sg

VISIT US: 75 Rowell Road, Singapore 208011

OPENING HOURS: Monday-Friday, 9.00AM – 5.30PM

Why choose Chan Man Lee?

- ✓ Ready stock of 25,000 products
- ✓ No MOQ required for majority of our products
- ✓ Product pickup ready in 10 minutes~1 working day
- ✓ Certified/authorised distributor for over 30 brands
- ✓ Only supplies products from well-known, esteemed brands
- ✓ Only genuine, authentic, factory-original products
- ✓ Technical knowledge on product codes (IMPA, sizing, etc.)